

*The Good Life
Begins Here*

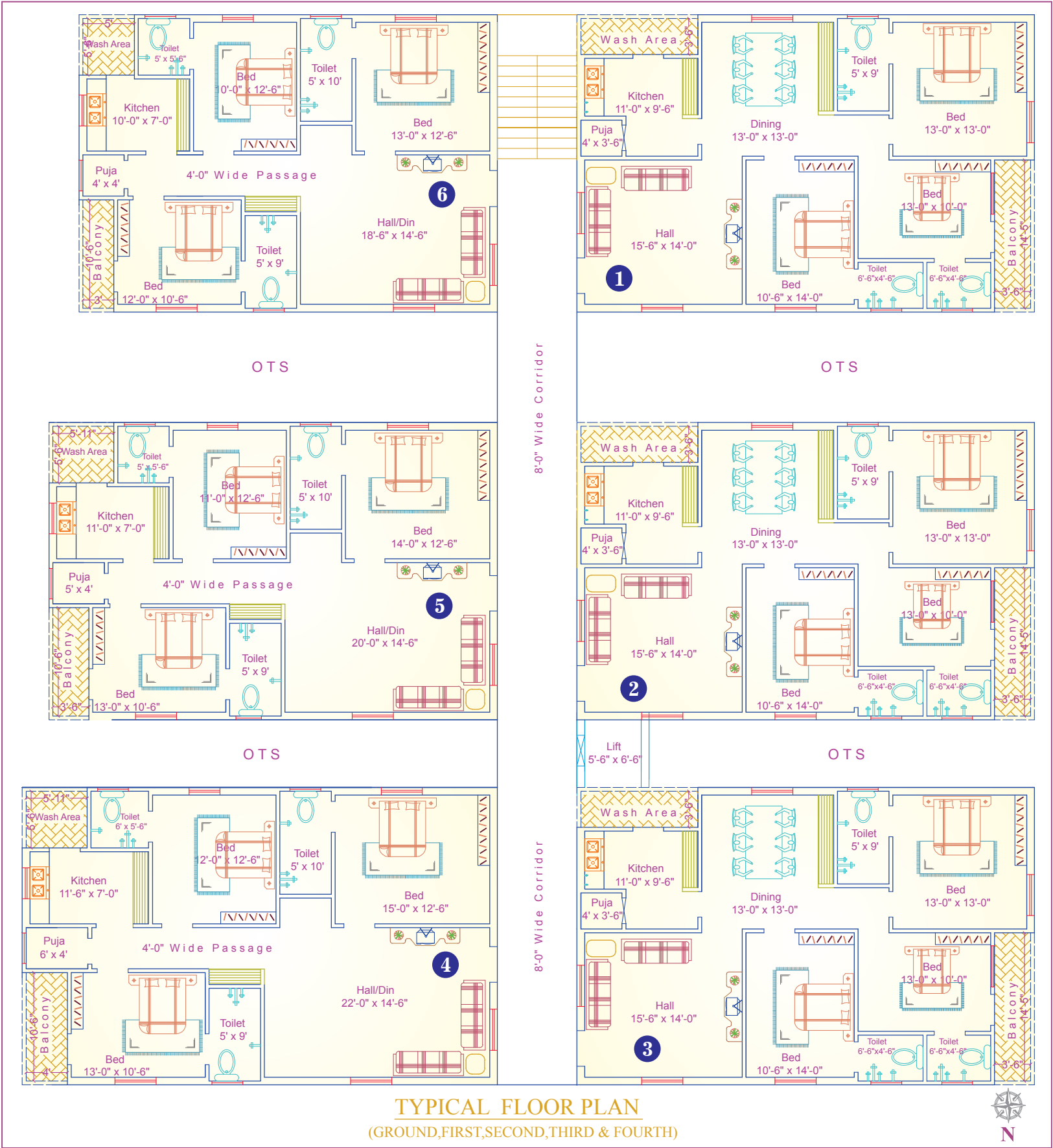


APACE COMMUNITY

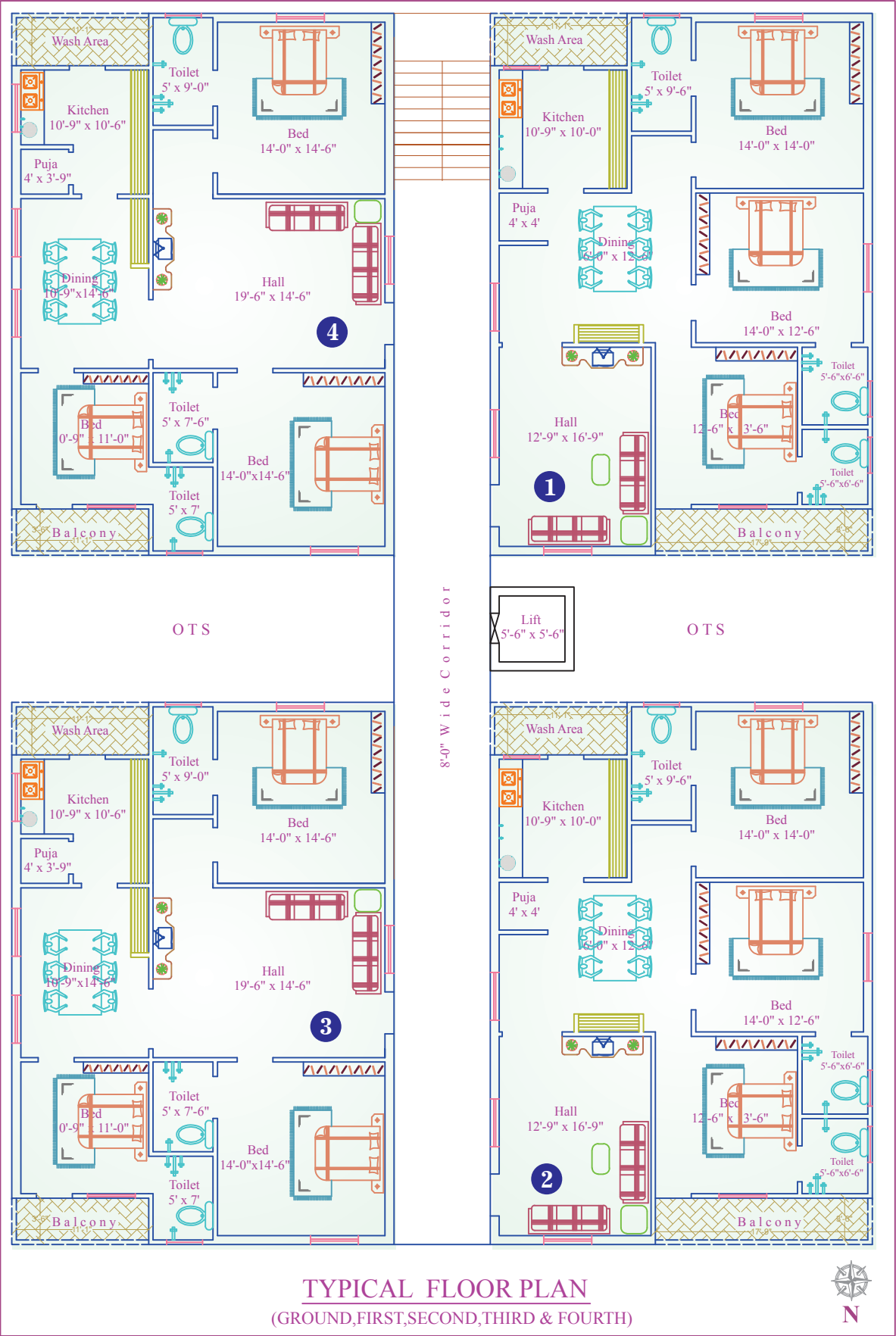
A Project of

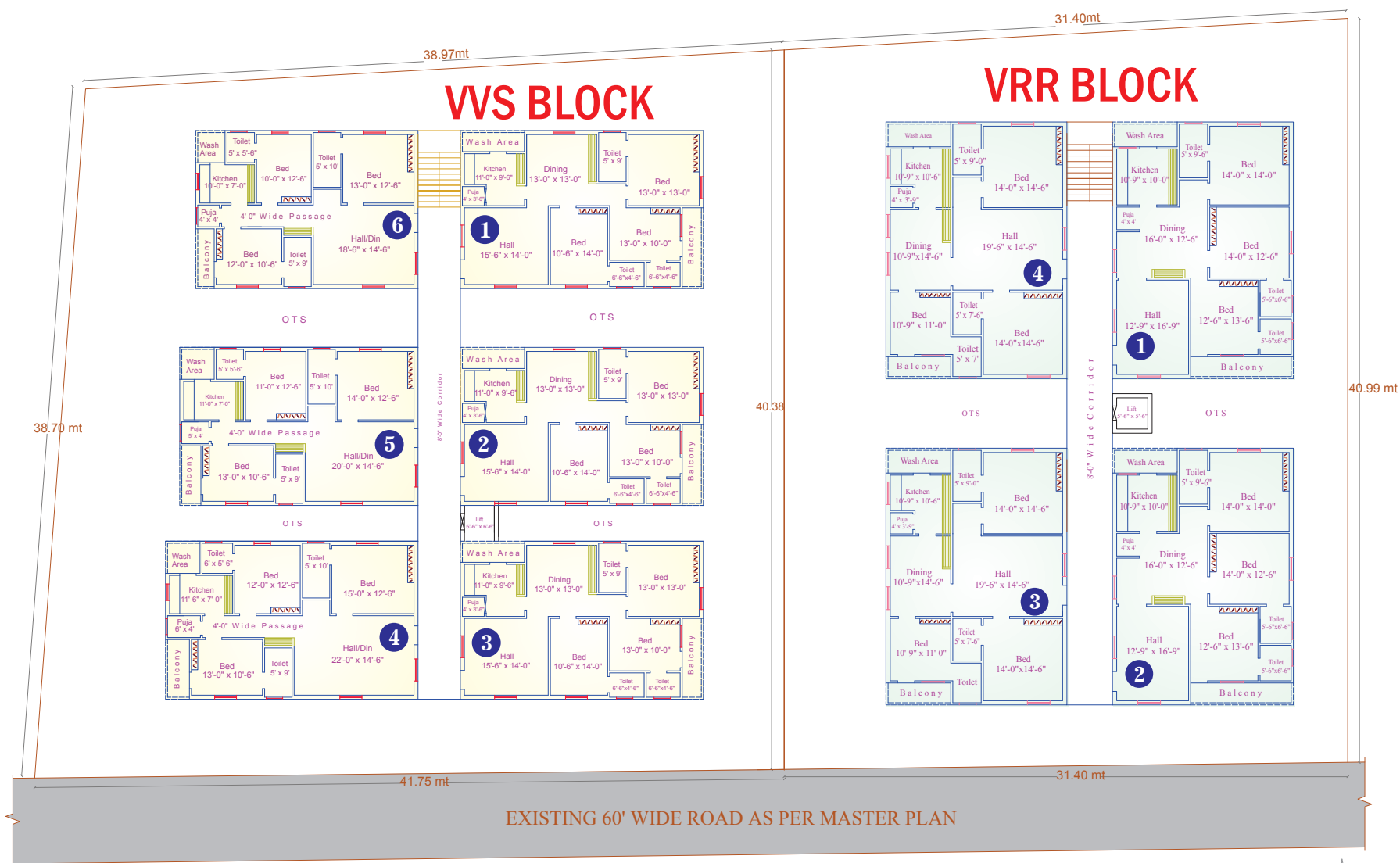


VVS BLOCK



VRR BLOCK





VVS BLOCK

Flat No.	Plinth Area in SFT	Common Area Incl. of Car Parking in SFT	Total Area in SFT
1 to 3	1290	390	1680
4	1340	400	1740
5	1270	380	1650
6	1180	350	1530

VRRBLOCK

Flat No.	Plinth Area in SFT	Common Area Incl. of Car Parking in SFT	Total Area in SFT
1 to 4	1460	440	1900

APACE COMMUNITY

A Project of



Apace Infrastructures (P) Ltd

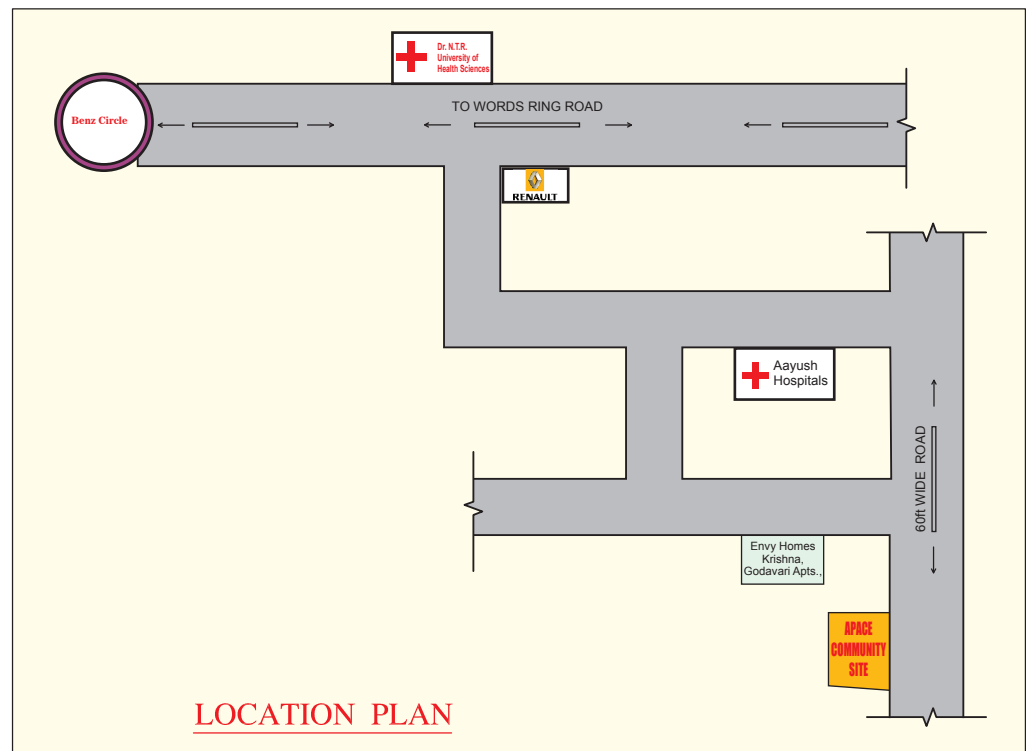
SPECIFICATIONS

Foundation and Structure	: Under Reamed Pile Foundation with Pile Caps and R.C.C Framed Structure
Walls	: 9"thick External Walls and 4"thick internal walls with conventional bricks
Plastering	: Cement mortar
Doors	: All the Door Frames & shutters are of teak wood
Windows	: UPVC Frames with sliding Doors fitted with glasses and mosquito meshes
Ward Robes	: Plywood sheets with sunglass work along with dressing features
Kitchen	: Modular kitchen system with chimney & stove and granite platform with steel sink and ceramic tiles dado over the flat form.
Hardware	: Door locks, Hinges and tower bolts made of steel finish and cup Board handles made of steel and wooden finish
Electrical	: 3 Phase Electricity with copper wire of Havells / Finolex make and switches are of Havells / legrand make
Plumbing	: Concealed CPVC plumbing fixtures of astral / asirvad or equal standard make
Flooring	: 2' X 2' Vitrified Tiles Flooring of Johnson / equal standard make
Toilets	: Johnson / equal standard tiles up to 7 ft. height, Jaguar /equal standard taps and closets and wash basins are of hind ware / equal standard make.
False Ceiling	: POP False Ceiling with light fitting provisions
Painting	: Internal Walls and ceiling with wall care putty and emulsion paints and external walls with emulsion paints. Wood polish work to all teak wood items (Door frames and shutters).
Water Supply	: Adequate Municipal water and Bore water supply
Parking	: Single spacious car parking at free of cost
Communication	: Telephone points, computer and Internet points, Intercom facility and TV points with DTH provisions

- Generator** : Silent proof stand by Generator of kirloskar / equal standard make for lift connection, motor connection, common lighting and all light and Fan points in each Flat.
- LIFT** : Six passenger capacity Johnson V3F lift with rescue device
- Other Facilities** :
1. Vitrified (2'x 2') tiles flooring in Corridor and Marble / Granite Slabs for Stair case Steps
 2. Safety Grills where ever necessary
 3. Tube light sets (Havells / Phillips), Fans (Havells / Crompton), show Lights for walls and false ceiling at free of cost.
 4. Solar Hot water system for hot water supply
 5. concrete or ceramic parking tiles in the parking area
 6. Electrical, drainage and water connections at free of cost.
 7. C.C. Cameras with recording provision in the parking area.
 8. C.C Cameras connectivity to T.V. point inside the Flat from the parking area and provision for Video entry system

Note:

1. Registration Charges, VAT, Service Tax and any extra taxes levied by the Govt are to be borne by the customer.
2. The Builder / Promoter reserve the rights to change the elevation and specification as deemed fit
3. This brochure is only conceptual presentation of the project and not a legal offering



Site Address

APACE COMMUNITY

Sri Rama Chandra Nagar
Opp: NTR Health university
(Ring Road)
Vijayawada-520008.

Office Address

Apace Infrastructures (P) Ltd

Flat No.3, 4th Floor,
Lohia Towers, Nirmala convent Road,
Patamata, Vijayawada-520010.
Cell 9395563339, (off) 0866-2491838
e-mail: info@apaceinfrastructures.com
ramboppana@hotmail.com
web : www.apaceinfrastructures.com

Architects & Structural Engineers

C.Mahesh, M.tech(Structural)

DESICONS, D No.40-5-19/9
Tikkle Road,
Opp: Siddhartha Arts College
Vijayawada-520010
Ph No. : Cell : 9246475767
(Off) : 9295003555